



Threshing rig owners - Windahl and Goplin. Early 1900's.



**Ole Sund**  
Marsh Grove's peddler  
and walking newspaper



**Winter Travel**



**Inga & Lorraine Green**



**Nels and Jenny Volding**  
Builder of Ellerth Store



**Modern threshing in the 30's - on the Green farm.**



**Threshing Scene**  
**Steam engine is used for power and straw was used for fuel.**



Harvesting and shocking on the Elias Haarstad farm, 1926.



Marsh Grove Baseball Team, 1922.



Favang Post Office at C. P. Haugen's, 1909.



Webjornson's first cabin. Notice sod roof. 1882



Marsh Grove roads in 1914 - Knox automobile.  
Thorval and Mandus Knutson



John Bakke - 1909- seeding with oxen.





Helga Haarstad



Left - Marianna Bakhaugen  
Right, Mary Knutson



Mary Engen

Knitting and Spinning by first pioneer women.



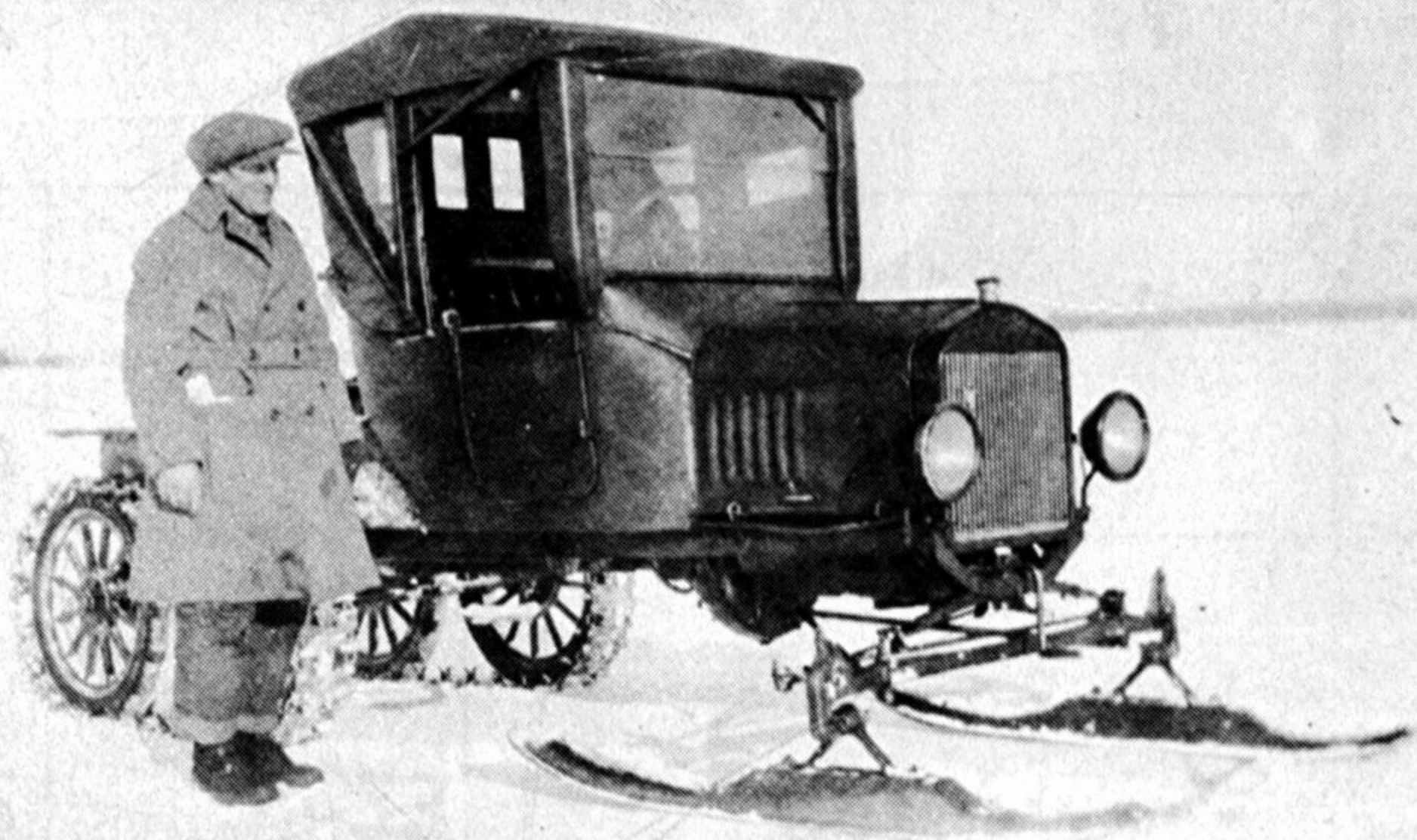
Early days in the Lee School.



H. C. Haugen's prompt Mail Service.

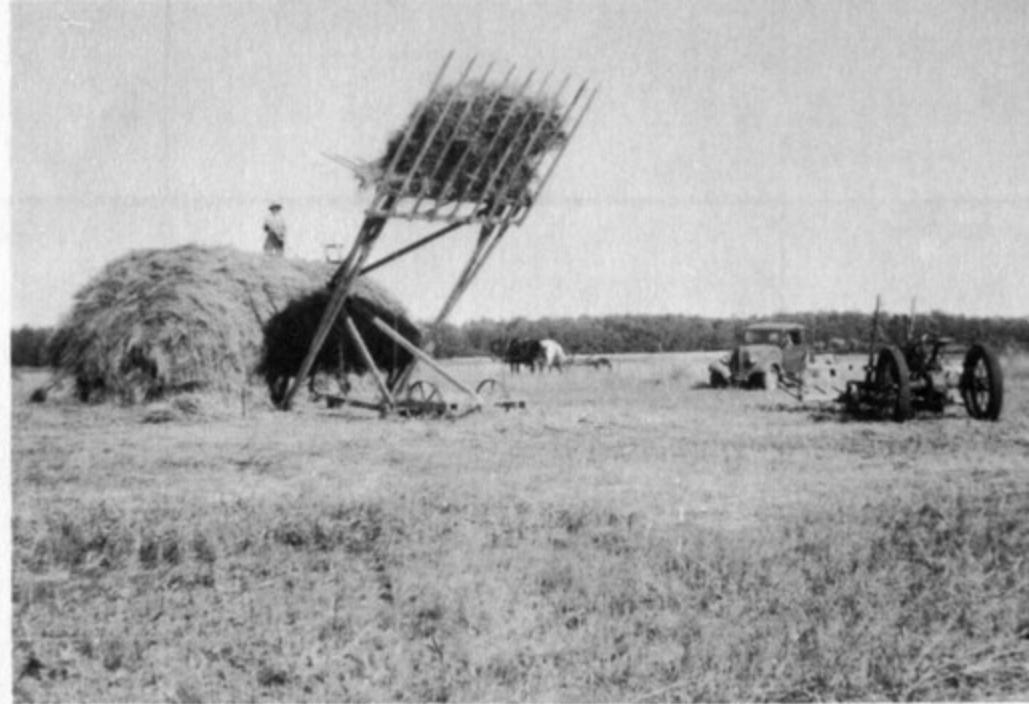


Typical School Children - Bundled up to face 54° below zero weather.





**A powerful flowing well drilled in 1908 by Ole Ihle on the John Knutson homestead, spouting water 20 feet above ground level.  
The S.E. ¼ Sec. 22 Marsh Grove Twp.**



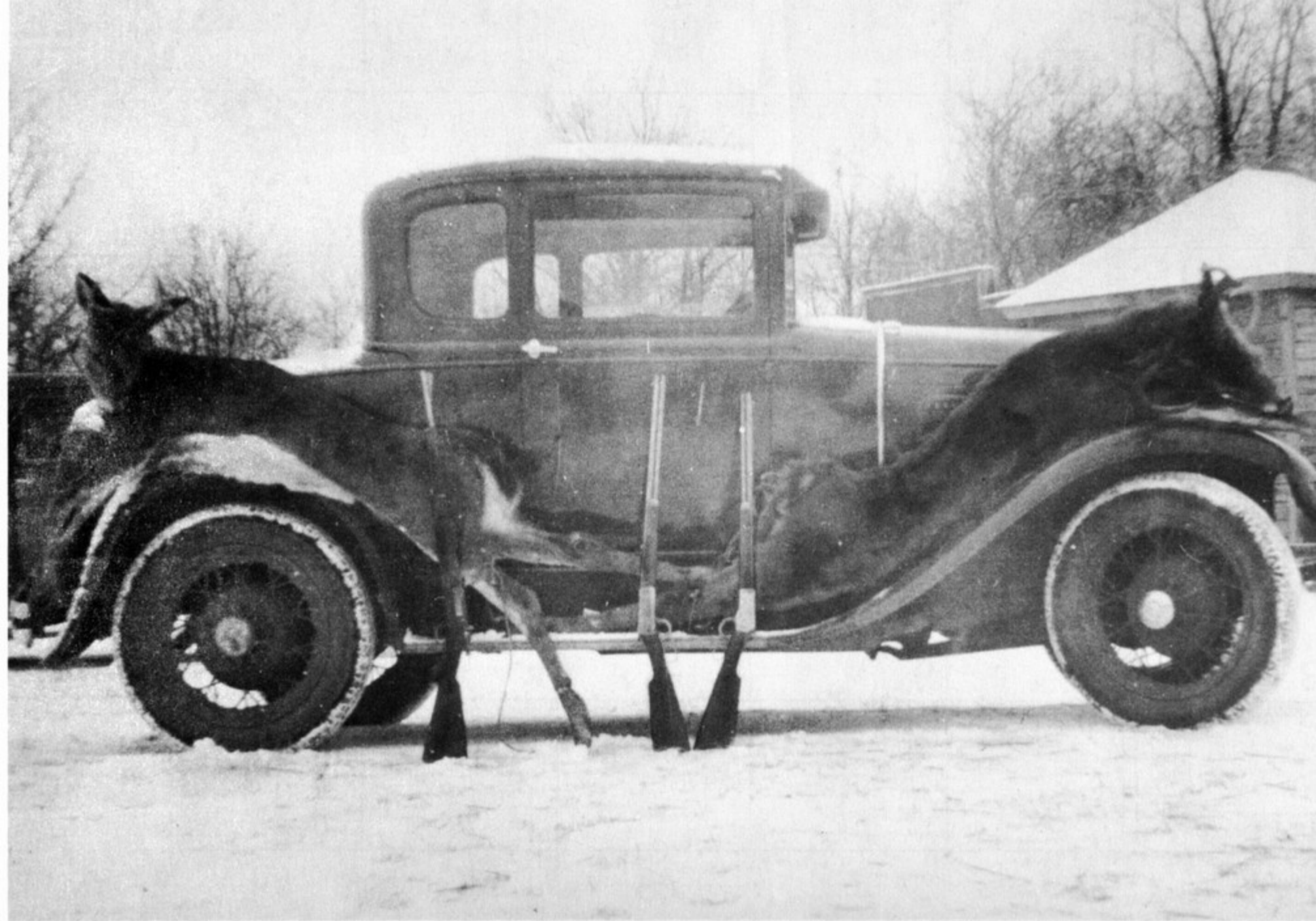
**Pace of yesteryear - The Knutson's.**



**Alice Knutson cutting hay on the Knutson farm.  
The S.E. ¼ Sec. 22 Marsh Grove**



The first ministers of Marsh Grove, Ostgulen and Aas.



A rewarding hunt in the 30's for Conrad C. Engelsrud.



Housemoving in 1895, by Sam Goplin - first Blacksmith.

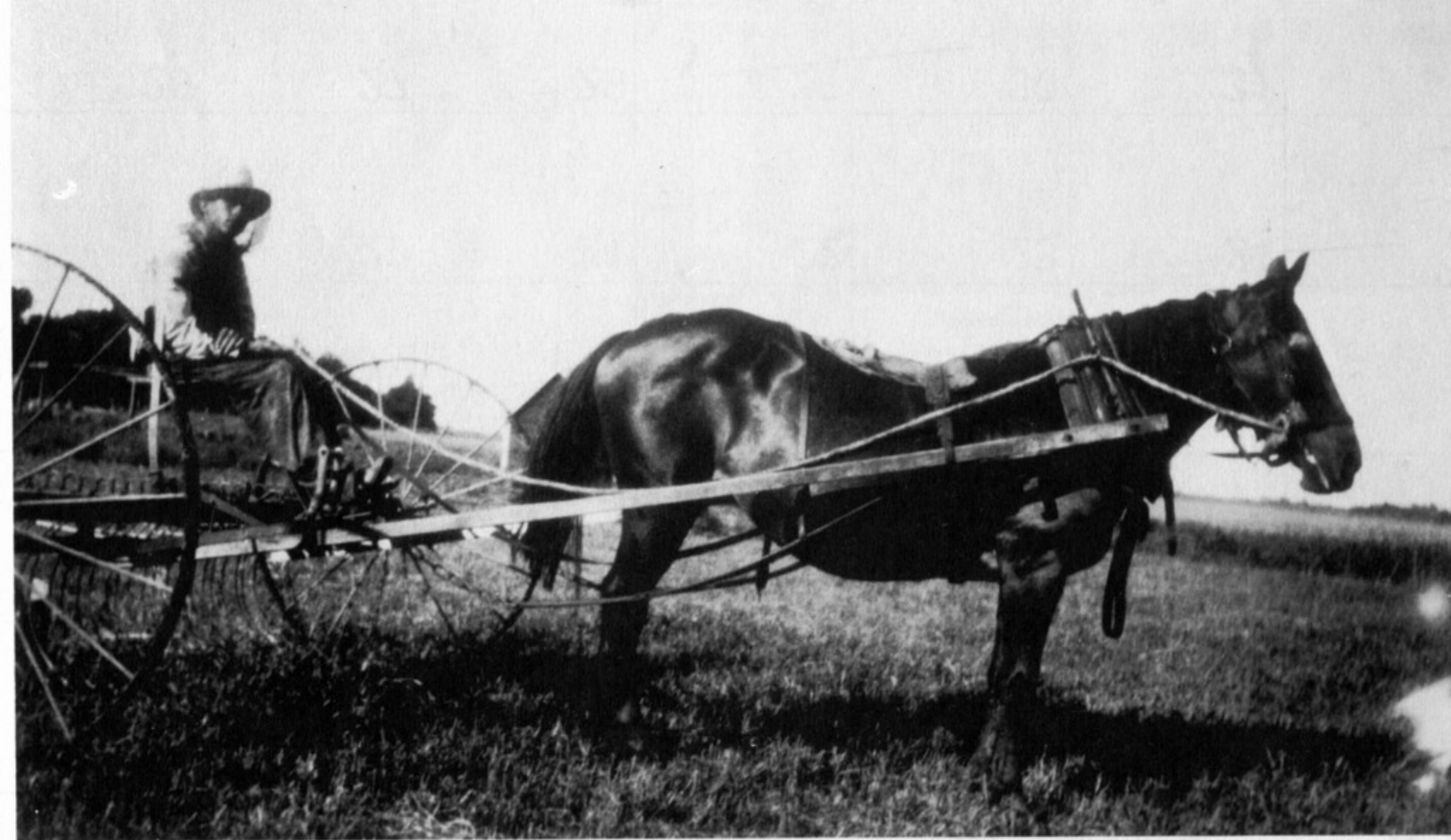




School Days at Ellerth in 1910



Marsh Grove's Community Center - 1922



1937 - The year of mosquitoes. Orris Harstad.



Typical peddler - on Newfolden streets. John Windahl, early 1900's.



Lind Homestead



Grimstad Cabin - built in 1884 - still standing.



**Twin City at work - Engen farm.**



**LeRoy and Mervin Knutson's pet, Rex.**



**First Pioneers:  
Windahl - Lane  
Haarstad - Bjornrud**



A cash crop - Conrad C. Engelsrud.





Westlin Farm.