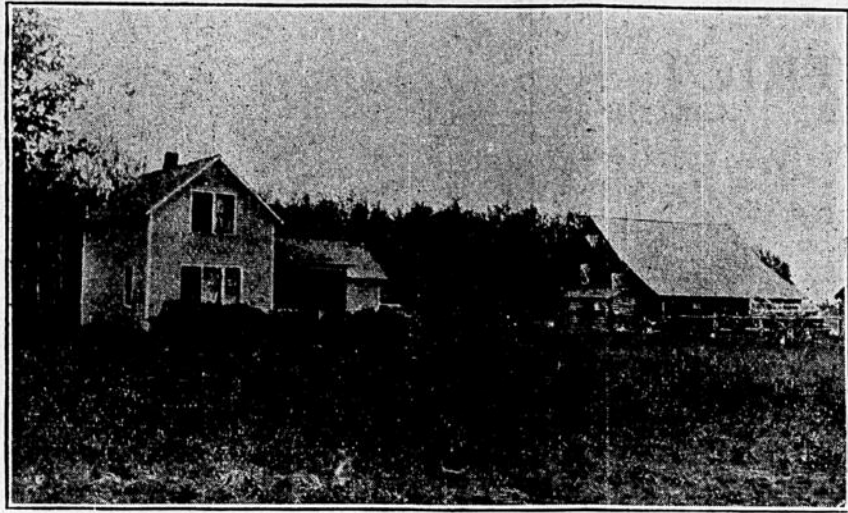


THE ROYAL ROAD TO FARM-LANDS BEST

FAR-FAMED MINNESOTA RED RIVER VALLEY

NEWFOLDEN IN OPPORTUNITY CIRCLE

SITUATED some 18 miles northwest of Thief River Falls on the Soo Line of railroad on the Middle river is Newfolden, which was platted as a town in 1905, to give the farmer settlers a trading center and cash market for all that was produced on their fertile acres. It is one of the many towns in Marshall county that has never experienced a boom, but its growth has been steady and progressive to keep pace with the farm home building and today it is in the midst of a building boom, the Farmers State Bank having completed a splendid pressed brick building as also has the Peoples State Bank a two colored pressed brick and stone building, while throughout the business section there is being laid cement sidewalks which gives it a citified appearance and speaks volumes for the progressiveness of her business men. The cause of this upbuild is its splendid farming domain that surrounds it on all sides and especially this years crops, which are phenomenal in yield, covering wheat, oats, barley and rye, a yield with present ruling prices that will put every farmer on easy street and thereby add new prosperity to the merchants that supply them with their trade wants. As a grain center, Newfolden has two elevators, with a combined capacity of 40,000 bushels, the Farmers & Merchants Elevator Company that is incorporated for \$10,000 and the Hansen-Barzen Milling Company's line elevator, both of which handle during the crop year on an average of 400,000 bushels. Then there is the Farmers Co-Operative Creamery Association of Newfolden, that was established in 1906, and has proven a great drawing card for making this the trading center of farmer-dairymen, for this great dairying section. For the year ending January 1, 1915, this creamery paid the farmer dairymen for butter fat \$19.102, which was divided among one hundred fifty patrons. This is a splendid showing and it is as important to the welfare of a city or town to have a creamery as it would be to have a large manufacturing plant, the only difference being that the money is divided among the farmer-dairymen instead of the city or town wage earners. Newfolden is in the good roads section, the state road running east and west through the town and on the south it is skirted by the Middle river, which is spanned by a steel bridge, with concrete piers, erected at a cost of \$4,000. In railroad transportation, it has the Soo Line giving it two daily passenger train service, one north and one south, on the Winnipeg branch, furnishing the best of shipping facilities to the high priced markets of St. Paul-Minneapolis and Duluth. In livestock, Newfolden has two shippers, T. Nelson and O. T. Nelson, who are doing a large business in the shipping of beef cattle.



C. E. Brown Land Company's 240 Acre Farm 4 Miles From Newfolden.



John A. Johnson, 240 Acre Farm 6 Miles Southeast of Newfolden.

NEWFOLDEN'S PUBLIC SCHOOL SYSTEM.

There is a very tasteful public school building of concrete block construction, size 39x45 feet, with full basement, that cost \$4,500. The first floor has two splendid school rooms and the sub-basement one. The course of studies comprises two years of high school and all grades which are presided over by three teachers, while the enrollment is 81. The school directors are: C. H. Hansen, O. G. Olson, H. E. Myhre.

TOWNSHIP OFFICERS.

The Newfolden Township was organized some thirty years ago and by virtue of having had faithful public servants has so managed its affairs as to win the esteem of the voters of the whole township, regardless of political beliefs or nationality. The present township board comprises the following well known taxpayers: B. Svendsen, chairman; Nels Skaug, clerk; Gust Eckman, treasurer; S. C. Nash and P. S. Moirud comprising the board.

NEWFOLDEN'S CHURCHES.

There are the Swedish Lutheran and Norwegian Lutheran churches that have flourishing congregations, while in the outlying country there are many others, that prove the people to be worshipers and of the God-fearing type and reflects the moral standing of its people, and that is why this has always been saloonless territory.

NEWFOLDEN AS A BANKING CENTER.

The pioneer financial institution of this section is the Farmers State Bank, established in 1905. It is housed in its own classy building, built of Menomonie sand blast brick, with sandstone trimming, size 24x42 feet. It is handsomely furnished with bronze wickets, the interior being of mahogany finish and furniture to match, with cashier's room in the rear. Then there is

the brick and concrete vault with safe deposit boxes for the use of patrons, fire proof, while in the interior of the vault is a Diebold safe with automatic time lock, for the safe keeping of the depositor's money. The outer door of the vault is a Diebold screw door, making it as near burglar proof as human ingenuity has been able to devise. The Farmers State Bank had deposits at the close of business, June 23rd, of \$120,801.39, loans \$107,000. The capital is \$10,000, with surplus of \$5,000. The officers of the bank are: O. L. Melgaard, president; H. L. Melgaard, vice-president; H. E. Myhre, cashier; with the following directors and stockholders: O. L. Melgaard, O. H. Taralseth, Andrew Korstad, H. L. Melgaard, D. B. Bakke, T. L. Melgaard and H. E. Myhre, all men of the highest standing in the business and financial affairs of Marshall county.

Mr. Myhre, the cashier of the Farmers State Bank, was one of its first stockholders and has been its cashier since its establishment, which speaks volumes for his ability and popularity as a banker. The bank does a large business in real estate and insurance, besides making commercial collections and attending to the business of non-residents.

NEWFOLDEN TOWNSITE.

The townsite was platted by the Soo road land department and was afterwards purchased by Andrew Korstad and H. E. Myhre. There are 75 lots in the business and residence zone still unsold, size 25 to 50x140 feet, priced at \$200 down, according to location. These lots are good buys as a speculation, as there can be no question but what Newfolden in the coming few years will have upwards of 1,000 population, which will mean that many of these lots will be priced and selling for \$1,000.

PEOPLES STATE BANK.

Newfolden, being surrounded by such a rich agricultural territory, it has been deemed a splendid business proposition to establish a new bank and to fill this need, the Peoples State Bank of Newfolden has been organized with a capital of \$10,000 and surplus of \$2,000, which gives it ample capital with the splendid men back of it to meet all the requirements of the territory. The first move made by the Peoples State Bank was the erection of a modern bank building, size 27x40 feet, built of two colored pressed brick with stone trimmings, with a large vault. The officers of the Peoples State Bank of Newfolden are: H. L. Wood, president; Herman Engelsrud, vice-president; Carl Hanson, cashier; and H. M. Hanson, assistant cashier; officials of known integrity.

C. E. BROWN LAND COMPANY.

This company opened its Newfolden office, January 14, 1914, with George Hovig manager, and J. A. Hoberg, field manager. The main office is at Ada, Minnesota and the officers are: C. E. Brown, president; J. P. Garber, vice-president; and M. A. Peterson, secretary and treasurer. In 1914, their first year's business, they sold 40 farms and the 1915 outlook is exceedingly bright, as they have already sold 6,500 acres, all within the trading zone of Newfolden. The lands this company offer for sale cover the best improved farms and wild lands in the good roads section, where creameries are one of the big assets to the farmer-dairymen, the best of schools and churches, making it an ideal section to establish a new farm home, where everything is on the side of the settler, cash markets, telephone service and railroad transportation.

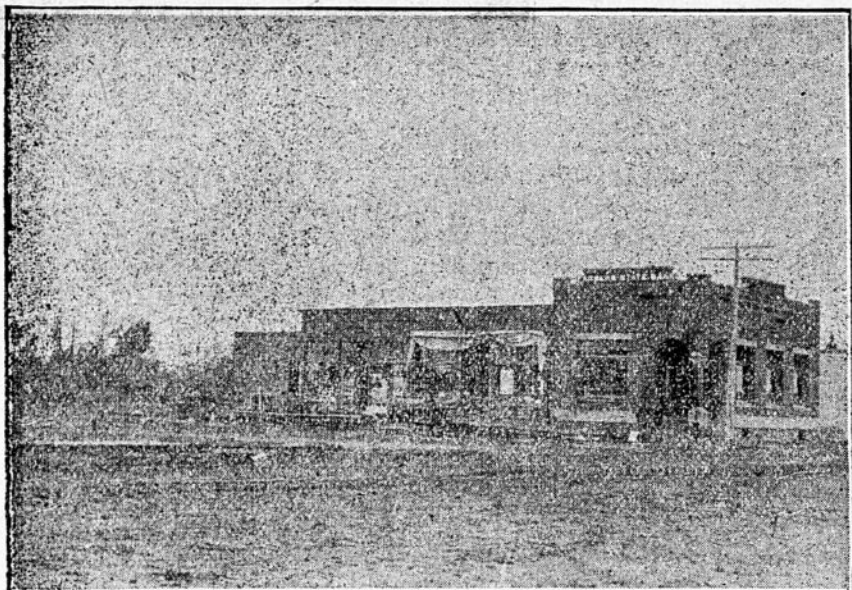
CARLSON MERCANTILE COMPANY.

The most enterprising and widely known general merchants in this section of the Valley is the Carlson Mercantile Company, which have two stores, one at Newfolden and the other at Holt. The Newfolden store was opened August 1st and from the day it commenced business up to the present hour it has become the leading trading center for dry goods, ladies ready-to-wear garments, men's and boys' clothing, ladies' and misses', men's and boy's shoes, staple and fancy groceries. They make a specialty of handling country produce, paying the highest cash price, which of itself is an inducement to make the Carlson Mercantile Company the farmers trading center.

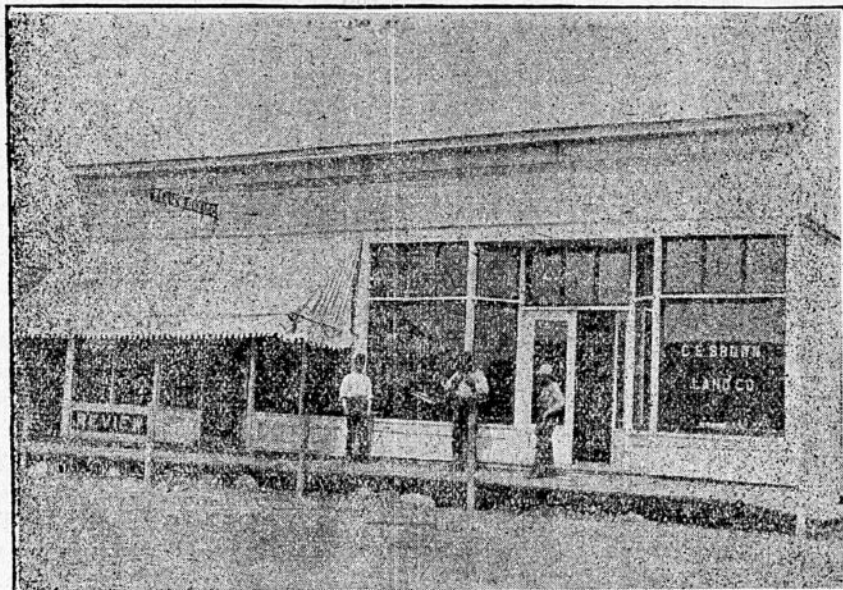
AMUNDSON & LEE.

In general merchandise and hardware, Amundson & Lee are the pioneers, having been established since 1910. They occupy their own business block, size 50x60 feet and warehouse, 16x60 feet.

The Newfolden Review is published by E. M. Wilson, who is making a wide reputation by his ability as a writer and as an expert printer.



Farmers State Bank Building, Newfolden.



C. E. Brown Land Company's Office, Newfolden.

VIKING IN THE DAWN OF A NEW ERA

VIKING should have a population of 1,000 and instead of four business houses, it should have fifteen but it has been kept back by some of its business men, but not by the tillers of the soil, for they are of the most progressive type and are doing things along advanced lines of agricultural pursuits. The farmers have set a pace in crop production, tilling not mining the soil, that farmers in other sections of Marshall county will find it hard to follow.

Viking is situated eighteen miles east of Warren, on the Thief River Falls—Kenmare system of the Soo Line, giving it the best of passenger and freight service, and in the good roads section, being on the Pembina trail, running from Crookston to Karlstad, covering seventy miles, and also on the State road, running west to Warren and east to Thief River Falls, giving it a large trading area, and making it a trading center of importance. At this writing, there are only four gen-

eral merchandise stores, the leader being Styrlund Bros., general merchandise, established in 1905. The Styrlund Bros. have two stores, size 24x60, covering hardware, furniture and agricultural implements, while there is a warehouse for surplus stock, 24x24. Then they have another splendid business block, 52x46 feet, where a complete stock of staple and fancy groceries, dry goods, men's and boys' clothing, ladies' and men's shoes is carried, making an up-to-date stock, sold at right prices and making this the big trading center.

VIKING AS A GRAIN MARKET.

There are two elevators, the Spaulding Elevator Co. and the Atlantic Elevator Co., with a combined capacity of 45,000 bushels, and that handled 150,000 bushels of grain for the 1914 crop year, but this year's crop will swell this amount to close to 200,000 bushels.

THE RELIGIOUS SIDE.

Viking has two splendid church edifices, the Swedish Mission that cost \$3,000, presided over by Rev. Werner Drotts, and the Norwegian Lutheran that cost

\$1,800, presided over by Rev. Lasseson. In addition to these churches, there are others in the outlying country tributary to Viking, which takes care of the religious wants of the rural population.

FARMERS' CO-OPERATIVE CREAMERY.

From January 1, 1913, to January 1, 1914, the Farmers' Co-Operative Creamery Co. of Viking, paid the farmer-dairymen for butter-fat, \$20,000. The average price paid per pound was 28 cents, and what is more, is in a very prosperous condition, which means that the farmers are keeping more dairy cows and thus increasing their wealth.

VIKING'S EDUCATIONAL ADVANTAGES.

Viking is in what is known as school district No. 37. A handsome, new school building has just been completed at a cost of \$7,000, size 39x64, with full concrete basement. It is a three-room school, teaching all the grades, including manual training. The school attendance is 50, presided over by three teachers. The

building has all modern school equipment, such as sanitary drinking fountains, hot-air heating and ventilating system. The school board: Geo. Nelson, clerk; C. A. Lindell, director; and Axel Anderson, treasurer.

VIKING TOWNSHIP BOARD.

The men who are at the head of municipal affairs are all tax-payers and are conducting the affairs of the township as they would their own business. They are progressive and are using the tax-payers' money to the best advantage. They comprise such men as Peter Erickson, chairman; Henry Sustad, clerk; August Peterson, treasurer; and supervisors, John Gustavson and Martin Forsberg.

BEST OF HOTEL ACCOMMODATIONS.

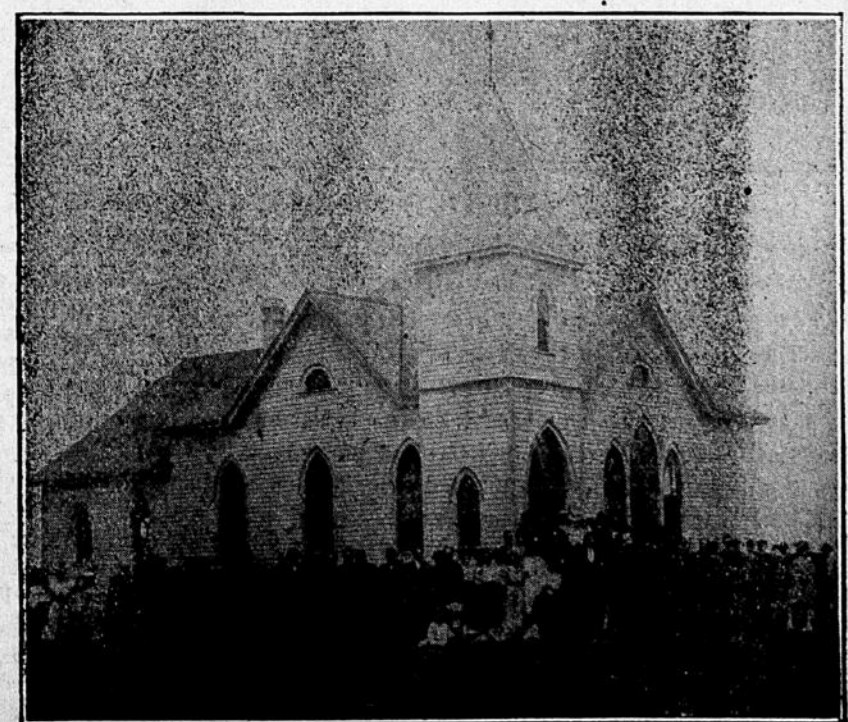
The Hotel Viking is a 15 room house, run on the American plan, where a splendid bill-of-fare is served. Then there are well-furnished sleeping rooms, noted for their snowy-white linen. Its proprietor is Oscar Jacobson, one of its best citizens.



STATE BANK OF VIKING.

VIKING AS A BANKING CENTER.

The State Bank of Viking was established in 1908 and has a paid-up capital of \$10,000, surplus and profits of \$2,000 and deposits of \$70,520. It is housed in its own building, of pressed brick with Bedford stone trimmings, size 22x36. There is a substantial brick and concrete vault with automatic time locks, making it fire and burglar-proof. The bank pays from 4 per cent to 5 per cent on time deposits, makes farm loans, transacts business for non-residents and writes fire and hail insurance. The president of the bank is O. H. Taralseth; vice-president, H. L. Melgaard; with I. M. Myrbo, cashier, who organized the bank ten years ago, and has proved himself to be the right man in the right position. Mr. Myrbo has great faith in the future of Viking and its territory, and for this reason loses no opportunity to put it on the map of publicity. The bank also has a land department, owning some 2,000 acres of improved farms and wild lands, located within five and seven miles from Viking, that is priced at from \$20 to \$50 per acre, according to farm buildings and nearness to trading centers, and not the quality of soil, for all of the soil is the deep, black, alluvial kind that has made this section famous.



SWEDISH MISSION CHURCH, VIKING.